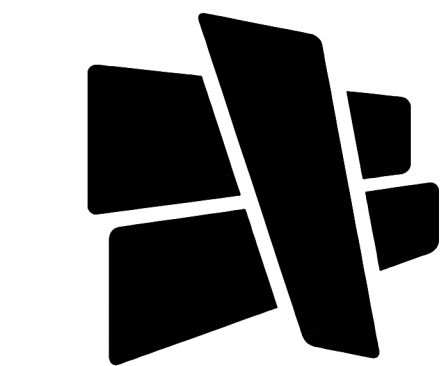


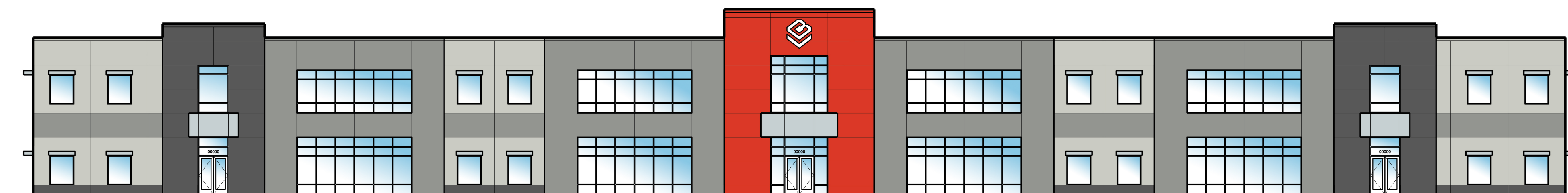
**KEYED NOTES**

1. PRE-CAST CONCRETE PANEL WITH PAINTED FINISH, REVEALS CAST IN AS SHOWN. REFER TO WALL SECTIONS FOR ADDITIONAL DETAIL.
2. 1" INSULATED TINTED GLASS IN THERMALLY BROKEN ALUMINUM FRAMING. REFER TO STOREFRONT ELEVATIONS FOR MORE INFORMATION.
3. 1" INSULATED TINTED GLASS IN THERMALLY BROKEN CURTAINWALL FRAMING. REFER TO CURTAINWALL ELEVATIONS FOR MORE INFORMATION.
4. PRE-FINISHED COMPOSITE METAL PANEL SYSTEM OVER METAL STUD FRAMING.
5. ALUMINUM SUN SHADE OVER STOREFRONT FRAMING.
6. INSULATED STEEL MAN-DOOR AND FRAME. PAINTED TO MATCH WALL COLOR.
7. INSULATED STEEL OVERHEAD DOOR, PRE-FINISHED WHITE.
8. DOCK SEAL, DOCK LEVELER AND TRAILER RESTRAINTS, TYPICAL AT ALL DOCK DOORS.
9. PRE-CAST CONCRETE PANEL FABRICATED TO ALLOW FOR FUTURE CUT IN OF DOCK DOOR.

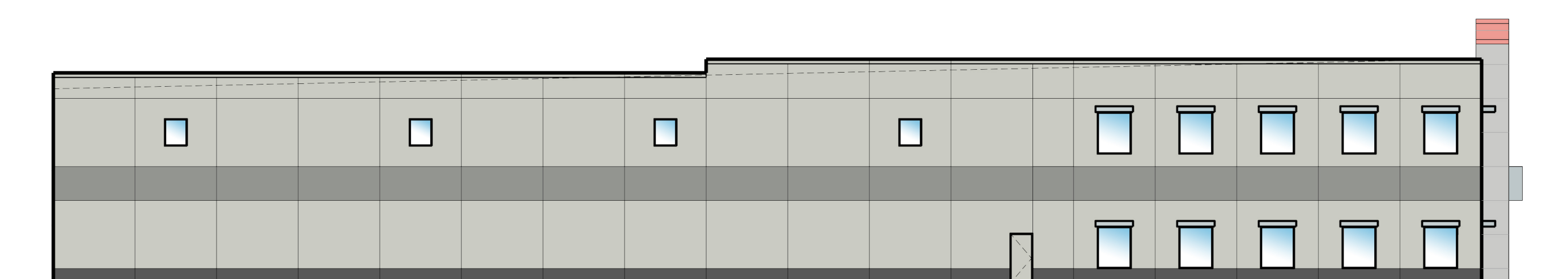


**CURRAN**  
ARCHITECTURE

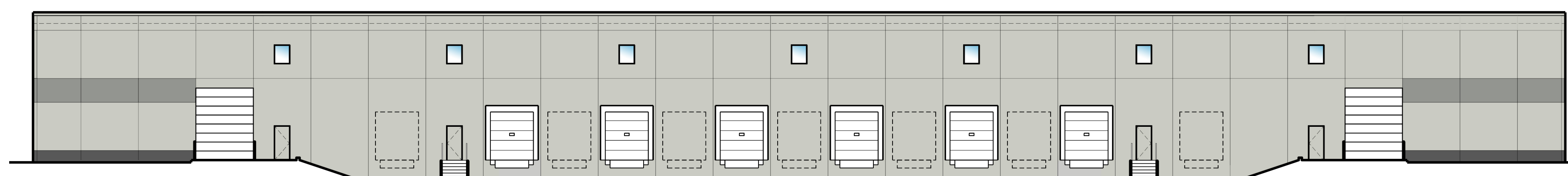
5719 LAWTON LOOP E. DR. #212  
INDIANAPOLIS, IN 46216  
O :: 317.288.0681  
F :: 317.288.0753



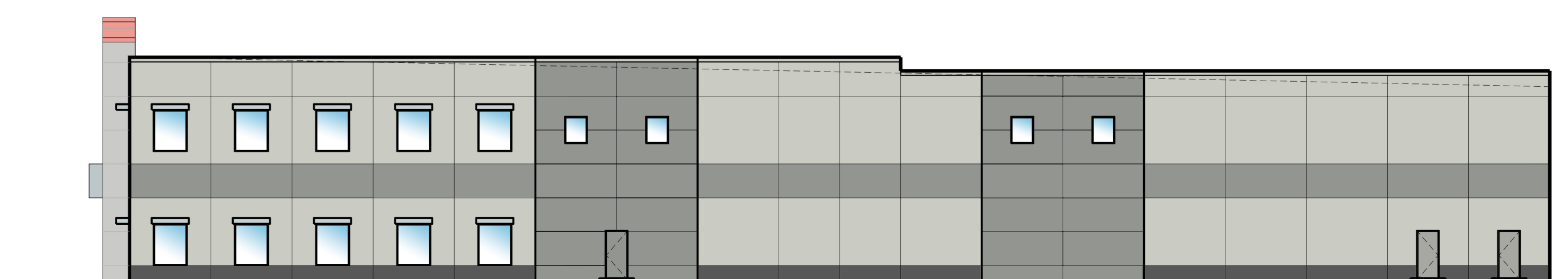
**EAST ELEVATION** 1  
1/16" = 1'-0"



**SOUTH ELEVATION** 2  
1/16" = 1'-0"



**WEST ELEVATION** 3  
1/16" = 1'-0"



**NORTH ELEVATION** 4  
1/16" = 1'-0"

**CERTIFICATION**

**PRELIMINARY**  
NOT FOR CONSTRUCTION

07.05.19

THIS DRAWING AND THE IDEAS, DESIGNS AND CONCEPTS CONTAINED HEREIN ARE THE EXCLUSIVE INTELLECTUAL PROPERTY OF CURRAN ARCHITECTURE AND ARE NOT TO BE USED OR REPRODUCED, WHOLE OR IN PART, WITHOUT THE WRITTEN CONSENT OF CURRAN ARCHITECTURE. © COPYRIGHT 2019, CURRAN ARCHITECTURE.

**PROJECT INFORMATION**

BUILD TO SUIT  
PROJECT NAME

NORTHPOINT LOT 1  
WESTFIELD, INDIANA

**ISSUE DATES**

DATE	DESCRIPTION

190131



**KEY PLAN**

EXTERIOR  
ELEVATIONS  
**A3.1**